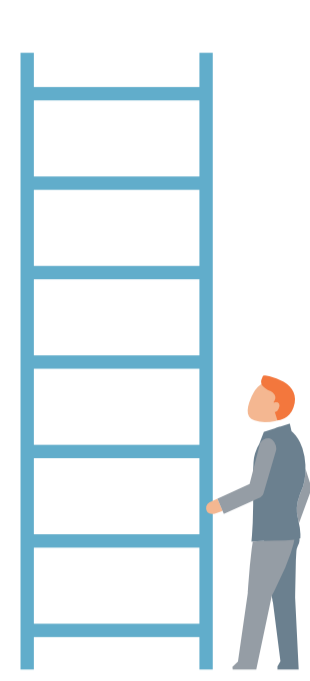


JOB PATH OF AN

Associate Consultant

As an Associate Consultant, you will have endless opportunities to build your career at Beacon Hill. There are multiple paths to promotion, and everyone's individual journey is unique. Scroll down to check out what a common job path of an Associate Consultant might look like...



START HERE:

ASSOCIATE CONSULTANT

Helps to recruit candidates to full-time positions.



PROMOTION TO...



CONSULTANT

Works to source and recruit candidates to full-time positions.



PROMOTION TO...

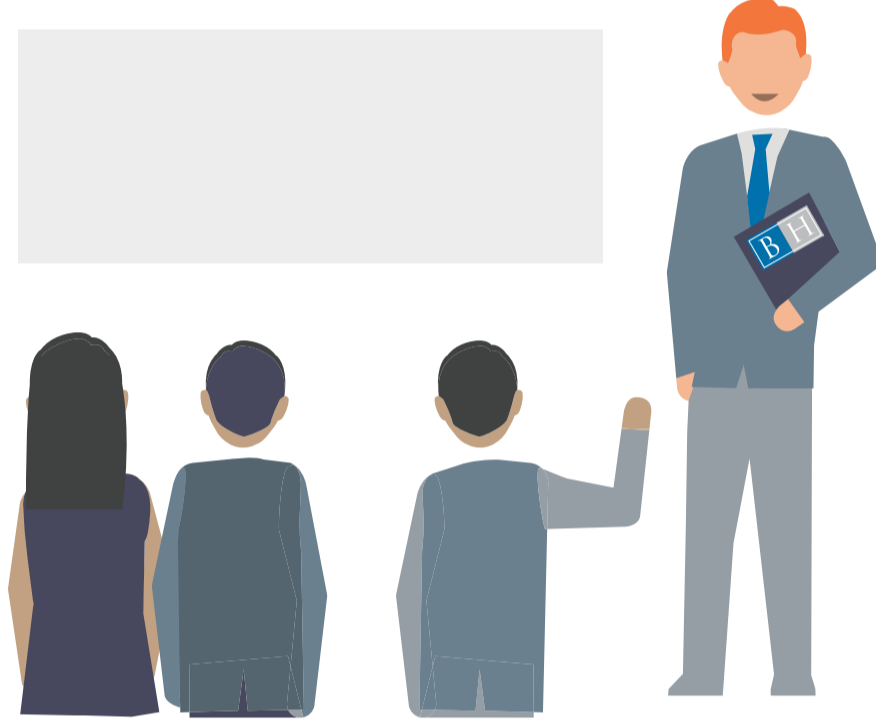


SENIOR CONSULTANT

Independently develops new business, manages client relationships, leads recruitment efforts for full-time positions, represents candidates for job placement and mentors new consultants.

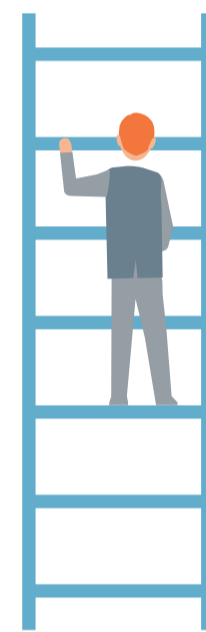


PROMOTION TO...

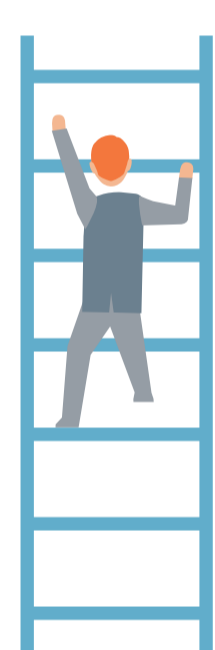


SENIOR MANAGING CONSULTANT

In charge of hiring, training and developing new consultants while leading direct-hire searches.



PROMOTION TO...



DIVISION MANAGER

Leads an executive search or direct hire team for a division within an office.

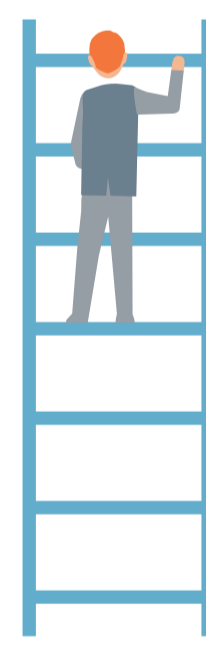


PROMOTION TO...

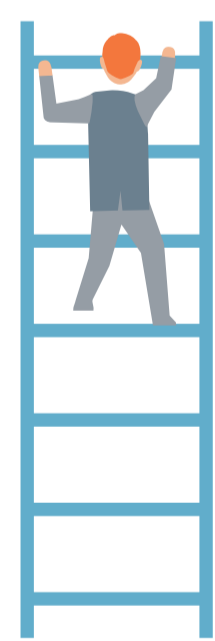


DIVISION DIRECTOR

P&L responsibility, leading an entire division within an office location.



PROMOTION TO...

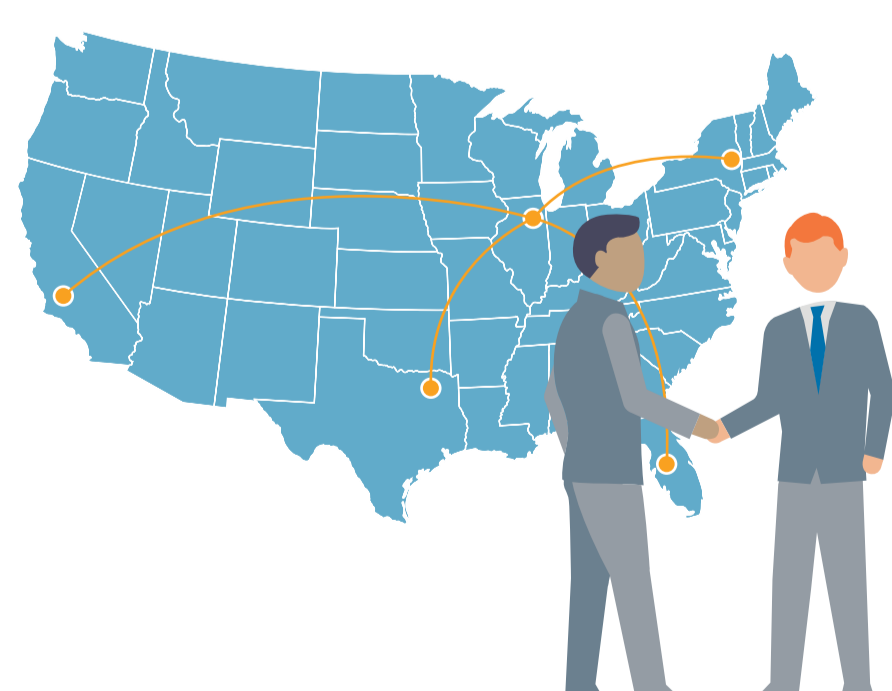


REGIONAL DIRECTOR/MARKET DIRECTOR

Leads multiple divisions within one office location, or the same division across a number of offices.

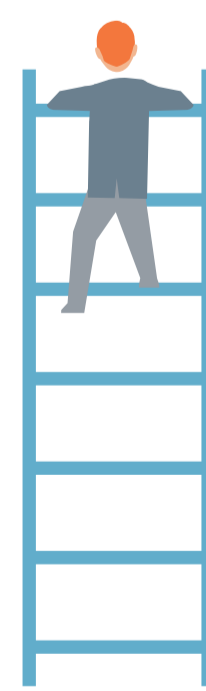


PROMOTION TO...

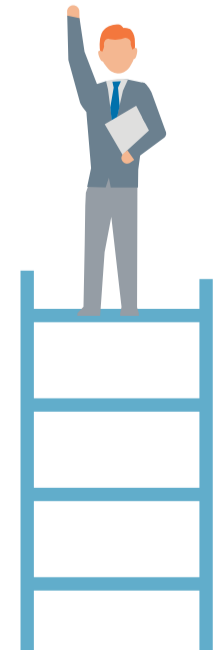


SENIOR REGIONAL DIRECTOR

Leads divisions across multiple regions and manages regional directors.



PROMOTION TO...



REGIONAL VICE PRESIDENT

An executive role. The regional vice president is in control of all aspects of a particular geographic region.



In addition to these paths, during your Beacon Hill career, you will also have the opportunity to potentially transition to our corporate recruiting team, other Beacon Hill Divisions, varied placement disciplines, or our back-office and corporate operations team.



BEACON HILL®
Employing the Future™